

# Fountain Utilities

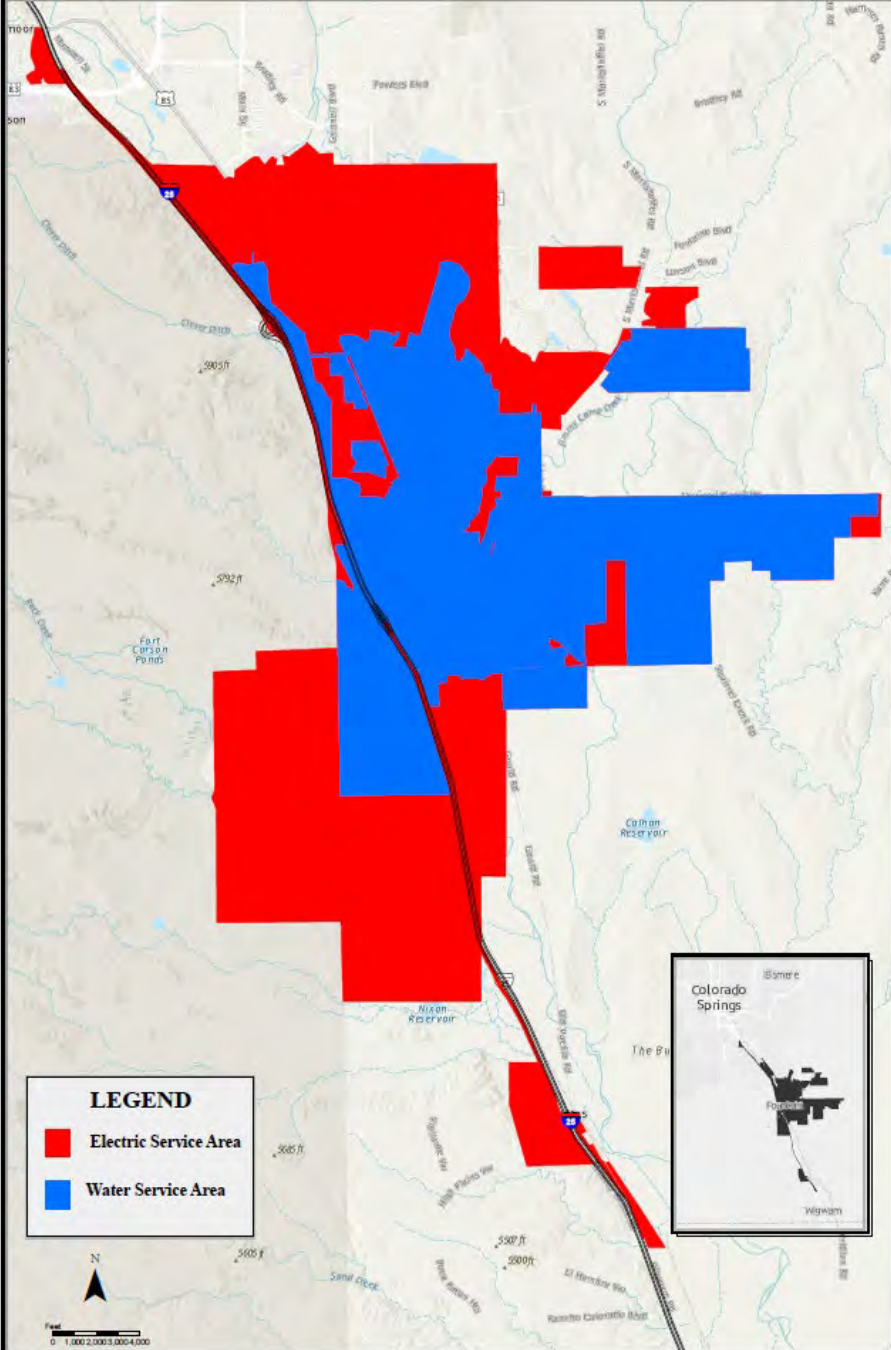
Established 1919. Community owned water and electric provider.

## Electric Services

Service Area: 39 square miles  
18,000 accounts

## Water Services

Service Area: 18 square miles  
8,900 accounts  
Serves a population of 28,000  
Annual Water Use: 724 million gallons



Utility Service Territories Water & Electric





# FOUNTAIN UTILITIES WATER USE

75% surface water, 25% ground water

1,984,000 gallons of water served daily (averaged)

71 gallons per person per day – residential use

30% commercial use; 70% residential use



# LAWN REPLACEMENT PROGRAM

Upgrade to a water wise yard with this cost share program.

Save water, reduce lawn maintenance, and create a colorful, dynamic habitat!



[ResourceCentral.org/lawn](https://ResourceCentral.org/lawn)  
[turfremoval@resourcecentral.org](mailto:turfremoval@resourcecentral.org)  
303-999-3820





# SLOW THE FLOW PROGRAM

Optimize your water use by participating in a free sprinkler system evaluation sponsored by your utility.

Learn about your sprinkler system, get a customized watering schedule specific to the needs of your landscape, and improve system efficiency during these 75 minute evaluations.



[ResourceCentral.org/sprinklers](https://ResourceCentral.org/sprinklers)  
[water@resourcecentral.org](mailto:water@resourcecentral.org)  
303-999-3824



# WATERWISE YARD SEMINARS

City of Fountain Utilities and Resource Central are hosting FREE virtual Waterwise Yard Seminars this spring and summer.

Topics range from low-water garden design and plant selection to smart irrigation and more.



# GREEN POWER INITIATIVE

- 1.35 million grant award from DOLA
- Offset electricity used at all City municipal operations buildings and all streetlights.
- 1.67 MW-DC system
- Produce ~3 million kWh annually
- ~870,000 square feet project area